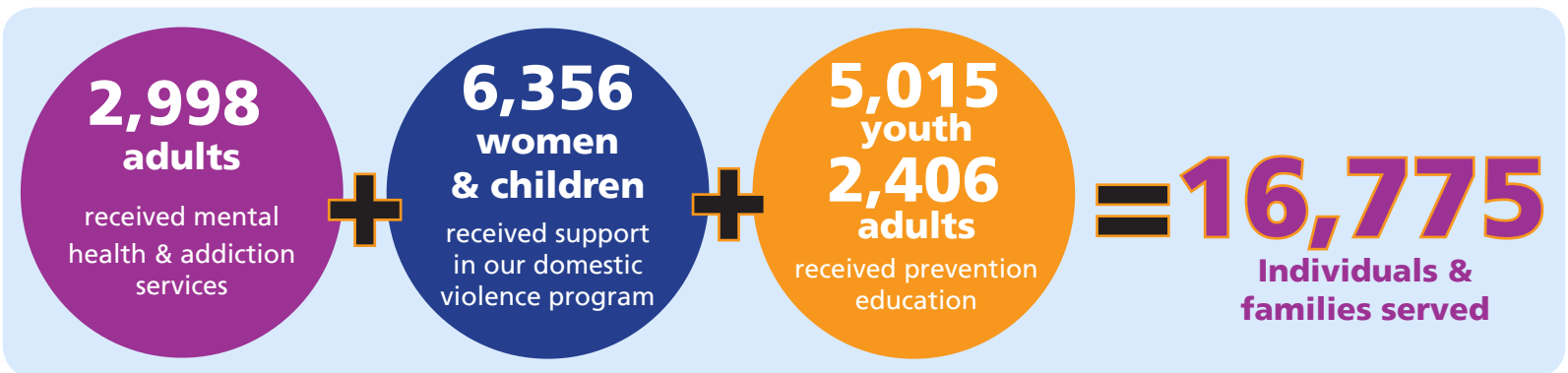




FACES of HOPE, HEALTH & RECOVERY





CLINICAL SERVICES



2669 clients received clinical services

BEHAVIORIAL HEALTH HOME



436 clients received care coordination & specialized services

CASE MANAGEMENT

398 clients received case management services



CRISIS APPOINTMENTS



533 clients received crisis appointments

EMPLOYMENT



97 people found & maintained gainful employment

JAIL DIVERSION

350 individuals received jail diversion services



Serving the towns of Ansonia, Beacon Falls, Bethany, Branford, Derby, East Haven, Guilford, Hamden, Madison, Milford, New Haven, North Branford, North Haven, Orange, Oxford, Seymour, Shelton, West Haven and Woodbridge.

HOUSING



179
clients served
in supervised or
supportive housing

SOCIAL CLUBS

203
clients participated
in our social clubs



YOUNG ADULT SERVICES

69
clients (ages 18 - 25)
received
specialized services



MENTAL HEALTH FIRST AID

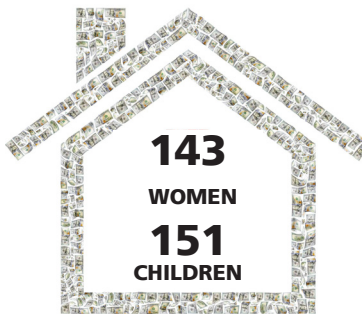


450
adults completed
MHFA trainings

DOMESTIC VIOLENCE SERVICES



3286
Hotline calls



143
WOMEN
151
CHILDREN
Sheltered



3598
Court Cases

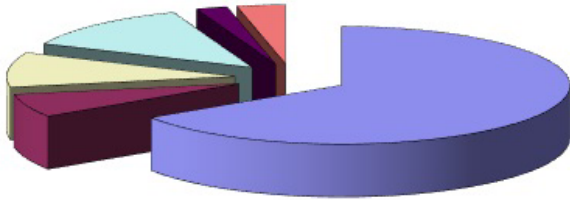
20,264



Contacts

FINANCIALS

REVENUE

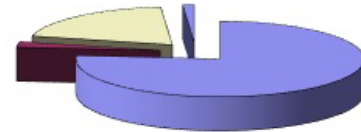


■ State Grants	■ Other grants
□ Sales/Contracts	□ Third Party Reimbursement
■ Fundraising/Contributions	■ Other revenue

Expenses	
Personnel costs	\$14,813,759
Contracted Services	458,609
Other Operating Expenses	3,868,821
Depreciation	249,649
Total Expenses	\$19,390,838

Revenue	
State Grants	\$12,831,150
Other Grants	1,250,385
Sales/Contracts	1,866,342
Third Party Reimbursement	2,485,311
Fundraising/Contributions	432,856
Other Revenue	668,666
Total Revenue	\$19,534,710

EXPENSES



■ Personnel Costs	■ Contracted Services
□ Other Operating Expenses	■ Depreciation

Thank you!

You made a difference in the lives of thousands! These faces of hope, health and recovery represent the 16,755 people you helped to rebuild happy, safe and healthy lives.

Your generous donation makes our mission of improving the lives and health of the individuals, families and communities we serve a reality. Your support is helping to build a better community for everyone.

Please visit our website at www.bhcare.org for a listing of our 2016 donors.



www.BHcare.org
[www.Facebook.com/CTBHcare](https://www.facebook.com/CTBHcare)
[www.Twitter.com/CTBHcare](https://www.twitter.com/CTBHcare)